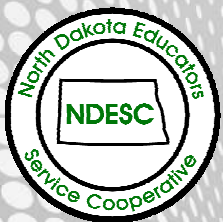


# LED Lighting

Cooperative Purchasing Connection  
LED Lighting Offering  
2016



# Table of Contents

## Tubes pg. 2-7



Direct Wire Tubes.....	pg. 2
Ballast Ready Tubes.....	pg. 3
U-Tubes.....	pg. 4
Miscellaneous Length Tubes.....	pg. 5
Retrofit Components.....	pg. 6
LED Ready Fixtures.....	pg. 7

## Exterior pg. 8-14



Wallpacks.....	pg. 8
Flood Lights.....	pg. 9
Area Fixtures.....	pg. 10
Area Shoeboxes.....	pg. 11
Miscellaneous Fixtures.....	pg. 12
Parking/Street Lights .....	pg. 13
Utility Bulbs.....	pg.14

## Fixtures pg. 15-17



High Bay Fixtures.....	pg. 15
Vapor Tight Fixtures.....	pg. 16
Troffer Fixtures.....	pg. 17

## Interior pg. 18-25



A19-A21 Bulbs.....	pg. 18-19
BR Bulbs.....	pg. 20
Par Bulbs.....	pg. 21
Downlight Retrofits.....	pg. 22
Ceiling Can Light PL Bulbs.....	pg. 23
MR16 & Candelabra Bulbs.....	pg. 24
Fixture Retrofit Panels.....	pg. 25

Solus LED is more than just a distributor of LED lighting, we are a solution based company and we will work with you to create the best results to fit your lighting needs. Solus will provide you with a free audit and proposal that will quantify your energy and maintenance savings, payback period and IRR. We try to go above and beyond

Our warehouse is centrally located in Maple Grove, Minnesota, making the shipping and delivery process quick for our customers. We stock our most popular items to minimize lead time for our clients so their lighting needs can be met quicker, sometimes as quick as one to three business days.

We offer quality products backed by exceptional warranties. If a bulb fails within the warranty time frame, send it back and it will be replaced. Many of our products are ENERGY STAR® or DesignLights Consortium® (DLC) rated and all of our products meet the UL® safety requirements to ensure the best product possible is lighting up your business.

Solus LED has a lot of experience working with state and government agencies. We have many state, local, county, township, tribal, and school projects completed. Our government sales operation is run by a former city public works administrator and retired state facilities supervisor. We have firsthand experience working in the state and government sector, which helps us better serve you.



#### MAINTENANCE FREE

- No ballast required
- No hazardous waste
- Extended warranties up to 10 years

#### SUSTAINABILITY

- No mercury
- No lead
- No UV emission
- 95% recyclable components

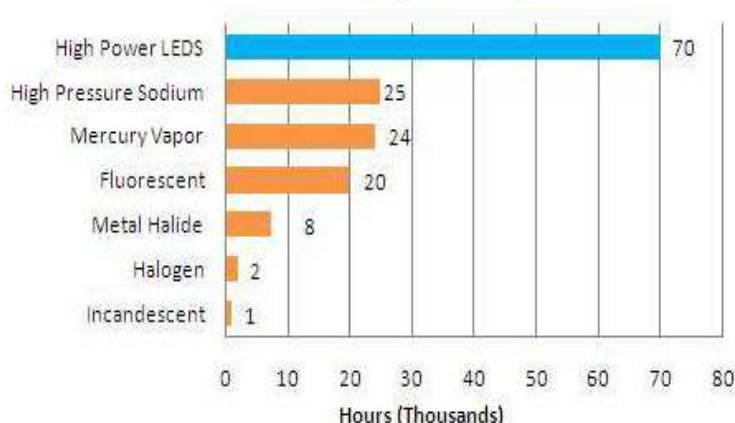
#### SAFETY

- Durable
- Shock resistant
- Impact resistant

#### ENERGY EFFICIENCY

- 90% more efficient than standard bulbs
- 50% more efficient than fluorescents
- Low heat output reduces cooling loads
- 50-90% energy savings

### Life Expectancy



# Single End or Double End 4' Tubes Direct Wire



### Applications

- Office Buildings
- Warehouses
- Commercial Buildings
- Garages
- Schools
- Hospitals
- Retail Settings

### Features

- No ballast required
- Made out of durable plastic
- Mimic look of traditional T8 tubes
- Reduce energy by up to 50%
- Instant on/off, mercury free
- 120-277V

### Certifications

- UL
- DLC

Product Number	Kelvin Temperature	Lumen Output	Efficacy	CRI	Warranty	Rating (L70)	Wattage
561238	5000K	1600 lm	133 lm/W	83	10 yrs	70,000 hrs	12W
561242	4000K	1705 lm	134 lm/W	83	10 yrs	70,000 hrs	12W
561237-A	4100K	1575 lm	105 lm/W	82	10 yrs	50,000 hrs	15W
561237-B	5000K	1575 lm	105 lm/W	82	10 yrs	50,000 hrs	15W
561239	3000K	1701 lm	108 lm/W	81	10 yrs	70,000 hrs	15W
561240	4000K	1701 lm	108 lm/W	81	10 yrs	70,000 hrs	15W
561241	5000K	1701 lm	108 lm/W	81	10 yrs	70,000 hrs	15W
561243-A	2700K	1701 lm	108 lm/W	81	10 yrs	70,000 hrs	15W
561243-B	3000K	1701 lm	108 lm/W	81	10 yrs	70,000 hrs	15W
561243-C	4000K	1701 lm	108 lm/W	81	10 yrs	70,000 hrs	15W
561243-D	5000K	1701 lm	108 lm/W	81	10 yrs	70,000 hrs	15W
646819-A*	4000K	1900 lm	105 lm/W	80	5 yrs	50,000 hrs	18W
646819-B*	5000K	1900 lm	105 lm/W	80	5 yrs	50,000 hrs	18W
561244	4100K	1950 lm	108 lm/W	82	5 yrs	50,000 hrs	18W
561245	5000K	1950 lm	108 lm/W	82	5 yrs	50,000 hrs	18W
561246	3000K	2076 lm	113 lm/W	85	5 yrs	70,000 hrs	18W
561247	3000K	2076 lm	112 lm/W	82	10 yrs	70,000 hrs	18W
561248	4000K	2076 lm	112 lm/W	82	10 yrs	70,000 hrs	18W
561249	4000K	2076 lm	113 lm/W	85	10 yrs	70,000 hrs	18W
561250	5000K	2076 lm	112 lm/W	82	10 yrs	70,000 hrs	18W
561251	5000K	2076 lm	113 lm/W	85	10 yrs	70,000 hrs	18W

### Options

Frosted or Clear Lens  
Regular Output or High Output Tubes

### Construction

Shatterproof plastic

### Key

\* Indicates Direct Wire OR Ballast Ready



# 4' Tubes Ballast Ready



### Applications

- Office Buildings
- Warehouses
- Commercial Buildings
- Garages
- Schools
- Hospitals
- Retail Settings

### Features

- No rewiring or ballast bypass required
- Made out of durable plastic
- Mimic look of traditional T8 tubes
- Reduce energy by up to 50%
- Instant on/off, mercury free
- 120-277V



### Certifications

- UL
- DLC

### T5 4' Ballast Ready Tube

Product Number	Kelvin Temperature	Lumen Output	Efficacy	CRI	Warranty	Rating (L70)	Wattage
646821-A	3000K	1600 lm	123 lm/W	85	10 yrs	50,000 hrs	13W
646821-B	3500K	1600 lm	123 lm/W	85	10 yrs	50,000 hrs	13W
646821-C	4000K	1600 lm	123 lm/W	85	10 yrs	50,000 hrs	13W
646821-D	5000K	1600 lm	123 lm/W	85	10 yrs	50,000 hrs	13W
646822-A	3000K	3027 lm	112 lm/W	85	10 yrs	50,000 hrs	27W
646822-B	3500K	3186 lm	118 lm/W	85	10 yrs	50,000 hrs	27W
646822-C	4000K	3354 lm	124 lm/W	85	10 yrs	50,000 hrs	27W
646822-D	5000K	3530 lm	130 lm/W	85	10 yrs	50,000 hrs	27W

### T8 4' Ballast Ready Tube

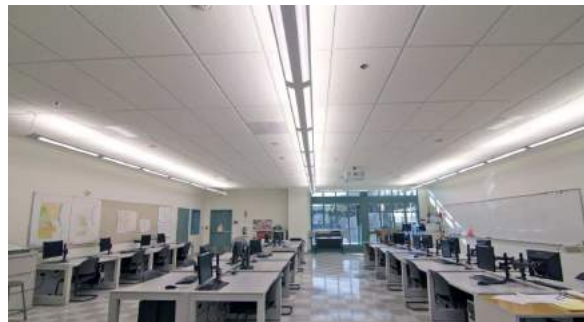
Product Number	Kelvin Temperature	Lumen Output	Efficacy	CRI	Warranty	Rating (L70)	Wattage
646817-A	4000K	1954 lm	118 lm/W	86	10 yrs	70,000 hrs	12W
646817-B	5000K	1954 lm	118 lm/W	86	10 yrs	70,000 hrs	12W
646818-A	4000K	1792 lm	117 lm/W	86	10 yrs	70,000 hrs	14W
646818-B	5000K	1792 lm	117 lm/W	86	10 yrs	70,000 hrs	14W
646820-A	4000K	2110 lm	120 lm/W	86	10 yrs	70,000 hrs	17W
646820-B	5000K	2110 lm	120 lm/W	86	10 yrs	70,000 hrs	17W
646819-A	4000K	1900 lm	105 lm/W	80	5 yrs	50,000 hrs	18W
646819-B	5000K	1900 lm	105 lm/W	80	5 yrs	50,000 hrs	18W

### Options

- Frosted or Clear Lens
- Regular or High Output Tubes

### Construction

- Shatterproof plastic



# U-Tubes



**Applications**

- Lodging
- Hospitals
- Schools
- Offices
- Commercial Buildings

**Features**

- Ballast ready or direct wire
- Traditional "U" design
- Even light distribution and illumination
- 120-277V

**Certifications**

- UL
- DLC

Product Number	Kelvin Temperature	Lumen Output	Efficacy	CRI	Warranty	Rating (L70)	Wattage
806215-A*	3000K	1770 lm	115 lm/W	85	10 yrs	50,000 hrs	12W
806215-B*	3500K	1770 lm	114 lm/W	85	10 yrs	50,000 hrs	12W
806215-C*	4000K	1770 lm	115 lm/W	85	10 yrs	50,000 hrs	12W
806215-D*	5000K	1770 lm	150 lm/W	85	10 yrs	50,000 hrs	12W
806213-A	3000K	1500 lm	100 lm/W	80	5 yrs	50,000 hrs	15W
806213-B	4000K	1500 lm	100 lm/W	80	5 yrs	50,000 hrs	15W
806213-C	5000K	1500 lm	100 lm/W	80	5 yrs	50,000 hrs	15W
806214-A	3000K	1850 lm	102 lm/W	87	10 yrs	50,000 hrs	18W
806214-B	4000K	1850 lm	102 lm/W	87	10 yrs	50,000 hrs	18W
806214-C	5000K	1850 lm	102 lm/W	87	10 yrs	50,000 hrs	18W

**Options**

Direct Wire or Ballast Ready

**Construction**

Shatterproof plastic

\* Indicates Ballast Ready



# Misc. Length Tubes



**Applications**

- Office Buildings
- Warehouses
- Commercial Buildings
- Garages
- Schools
- Hospitals
- Retail Settings

**Features**

- 2,3 and 5 foot length tubes
- Made out of durable plastic
- Mimic look of traditional tubes
- Reduce energy by up to 50%
- Instant on/off, mercury free
- 120-277V

**Certifications**

- UL
- DLC

Product Number	Kelvin Temperature	Lumen Output	Efficacy	CRI	Warranty	Rating (L70)	Wattage	Length
931421-A	3000K	925 lm	100 lm/W	82	10 yrs	70,000 hrs	9W	2'
931421-B	4000K	925 lm	100 lm/W	82	10 yrs	70,000 hrs	9W	2'
931421-C	5000K	925 lm	100 lm/W	82	10 yrs	70,000 hrs	9W	2'
931423-A	3000K	925 lm	100 lm/W	82	10 yrs	70,000 hrs	9W	2'
931423-B	4000K	926 lm	100 lm/W	82	10 yrs	70,000 hrs	9W	2'
931423-C	5000K	927 lm	100 lm/W	82	10 yrs	70,000 hrs	9W	2'
931422-A	3000K	925 lm	92 lm/W	80	5 yrs	50,000 hrs	10W	2'
931422-B	4000K	925 lm	92 lm/W	80	5 yrs	50,000 hrs	10W	2'
931424-A	3000K	1100 lm	110 lm/W	80	5 yrs	50,000 hrs	10W	2'
931424-B	4000K	1100 lm	110 lm/W	80	5 yrs	50,000 hrs	10W	2'
931424-C	5000K	1100 lm	110 lm/W	80	5 yrs	50,000 hrs	10W	2'
931425-A	3000K	1500 lm	125 lm/W	86	10 yrs	70,000 hrs	12W	3'
931425-B	4000K	1500 lm	125 lm/W	86	10 yrs	70,000 hrs	12W	3'
931425-C	5000K	1500 lm	125 lm/W	86	10 yrs	70,000 hrs	12W	3'
931426-A	3000K	1400 lm	116 lm/W	86	10 yrs	70,000 hrs	12W	3'
931426-B	4000K	1400 lm	116 lm/W	86	10 yrs	70,000 hrs	12W	3'
931426-C	5000K	1400 lm	116 lm/W	86	10 yrs	70,000 hrs	12W	3'
931427-A	3000K	2850 lm	129 lm/W	86	10 yrs	70,000 hrs	22W	5'
931427-B	4000K	2850 lm	129 lm/W	86	10 yrs	70,000 hrs	22W	5'
931427-C	5000K	2850 lm	129 lm/W	86	10 yrs	70,000 hrs	22W	5'
931428-A	3000K	2700 lm	127 lm/W	86	10 yrs	70,000 hrs	22W	5'
931428-B	4000K	2700 lm	127 lm/W	86	10 yrs	70,000 hrs	22W	5'
931428-C	5000K	2700 lm	127 lm/W	86	10 yrs	70,000 hrs	22W	5'

**Options**

Frosted or Clear Lens  
Ballast Ready or Direct Wire

**Construction**

Shatterproof plastic

# Retrofit Components



Non-Shunted

120V / 277V wiring for LED T8 with internal driver



**Features**

- Components to be used in retrofitting fixtures from fluorescents to LED
- Tombstone sets for tube light retrofits and Direct-Wire SEP U-Tubes

**Warranty**

- 10 years

Product Number	Product Description
154684	1 Live Medium Socket Universal Tombstone Replacement Set
154685	2 Live Medium Socket Universal Tombstone Replacement Set
154686	3 Live Medium Socket Universal Tombstone Replacement Set
154687	4 Live Medium Socket Universal Tombstone Replacement Set
154688	8 Foot Retrofit Kit Pre wired with Center Bracket
154689	Universal Tombstone Set, Wired 6 Medium Tombstones, SEP, No Bracket
154690	Universal Tombstone Set, Wired 8 Medium Tombstones, SEP, No Bracket
154691	Universal U-Tube Tombstone Set, Wired 2 Medium U-Tube Tombstones, SEP, No Br
154692	8 ft to 4 ft Fixture Conversion Kit No Pre wire
154693	Retrofitted Luminaire LED T8 Tube Single End Power Label
154694	Retrofitted Luminaire LED T8 Tube Single End Power THIS END Label
154695	Retrofitted Luminaire LED T8 Tube Double End Power Label

**Mounting**

Single End Powered  
G13 Medium Bi-Pin connection

**Intended Use**

Tombstone sets can be used with any tube length which are single ended power (SEP)  
Allows for new socket replacement in existing luminaires and ease of electrical installation during retrofit





# LED Ready Fixtures



**Features**

- LED ready fixtures for all uses
- Tube, troffer and vapor tight fixtures
- Pre-wired and LED ready

**Warranty**

- Warranty dependent upon type of bulbs used in fixture



Product Number	Product Description
4-1-UTIL-SEP	4 FOOT SINGLE BULB STRIP FIXTURE
4-2-UTIL-SEP	4 FOOT DOUBLE BULB STRIP FIXTURE
4-2-UTIL-SEP-REF	4 FOOT DOUBLE BULB STRIP FIXTURE/REFLECTOR
4-3-UTIL-SEP-REF	4 FOOT THREE BULB STRIP FIXTURE/REFLECTOR
8-2-UTIL-SEP	8 FOOT FOUR BULB STRIP FIXTURE
8-2-UTIL-SEP-REF	8 FOOT FOUR BULB STRIP FIXTURE/REFLECTOR
8-6-UTIL-SEP-REF	8 FOOT SIX BULB STRIP FIXTURE/REFLECTOR
4-6-HB-SEP-REF	2X4 SIX BULB /REFLECTOR HIGH BAY
4-2-HB-SEP-REF	2X4 FOUR BULB/REFLECTOR HIGH BAY
4-2-TROF-SEP	2X4 TROFFER TWO BULB
4-2-TROF-SEP-REF	2X4 TROFFER TWO BULB/REFLECTOR
4-3-TROF-SEP	2X4 TROFFER THREE BULB
4-3-TROF-SEP-REF	2X4 TROFFER THREE BULB/REFLECTOR
4-2-VP-SEP	1X4 TWO BULB VAPORTIGHT
4-3-VPT-SEP	1X4 THREE BULB VAPORTIGHT
8-4-VPT-SEP	1X8 FOUR BULB VAPORTIGHT
8-6-VPT-SEP	1X8 SIX BULB VAPORTIGHT
4-WIDE-6-VPT--SEP	4 FOOT 4 FOUR BULB WIDE BODY VAPOR TIGHT
4-WIDE-6-VPT--SEP	4 FOOT 6 SIX BULB WIDE BODY VAPOR TIGHT

**Construction**

Solid and durable steel housing



# Wall Pack Fixtures



Non-Cutoff



Architectural



Slim Wall Pack



Full Cutoff



### Applications

- General Site Lighting
- Doorways
- Loading Docks
- Exterior Pathways
- Alleys

### Features

- Mercury free fixtures
- No UV emissions
- Substantial energy savings over metal halide
- Suitable for interior or exterior use
- Instant on/off
- 120-277V

### Certifications

- UL
- DLC

Product Number	Kelvin Temperature	Lumen Output	Efficacy	CRI	Warranty	Rating (L70)	Wattage	Style
461842-A	4000K	1310 lm	100 lm/W	83	7 yrs	50,000 hrs	13W	Architectural
461842-B	5000K	1310 lm	100 lm/W	83	7 yrs	50,000 hrs	13W	Architectural
461846-A	4000K	1870 lm	93 lm/W	83	7 yrs	50,000 hrs	20W	Architectural
461846-B	5000K	1870 lm	93 lm/W	83	7 yrs	50,000 hrs	20W	Architectural
461843-A*	3500K	1800 lm	81 lm/W	75	7 yrs	70,000 hrs	22W	Mini Non-Cutoff
461843-B*	5000K	1850 lm	84 lm/W	75	7 yrs	70,000 hrs	22W	Mini Non-Cutoff
461853	5000K	3249 lm	149 lm/W	85	5 yrs	50,000 hrs	23W	Circular
461845-A	4000K	2430 lm	93 lm/W	83	7 yrs	50,000 hrs	26W	Slim
461845-B	5000K	2430 lm	93 lm/W	83	7 yrs	50,000 hrs	26W	Slim
461847-A	4000K	2430 lm	93 lm/W	83	7 yrs	50,000 hrs	26W	Architectural
461847-B	5000K	2430 lm	93 lm/W	83	7 yrs	50,000 hrs	26W	Architectural
461844-A*	3500K	2400 lm	80 lm/W	70	7 yrs	70,000 hrs	30W	Mini Non-Cutoff
461844-B*	5000K	2500 lm	82 lm/W	70	7 yrs	70,000 hrs	30W	Mini Non-Cutoff
461848	5000K	3350 lm	96 lm/W	80	5 yrs	145,000 hrs	40W	Full Cutoff
461854	5000K	4966 lm	107 lm/W	85	5 yrs	50,000 hrs	46W	Cylinder
461852	5000K	4900 lm	94 lm/W	80	5 yrs	145,000 hrs	55W	Full Cutoff
461849-A	4000K	3860 lm	71 lm/W	65	7 yrs	50,000 hrs	60W	Slim
461849-B	5000K	3860 lm	71 lm/W	65	7 yrs	50,000 hrs	60W	Slim
461850	5000K	5000 lm	83 lm/W	70	7 yrs	70,000 hrs	60W	Full Cutoff
461851	5000K	4690 lm	78 lm/W	65	7 yrs	50,000 hrs	60W	Full Cutoff
461855	5000K	7200 lm	90 lm/W	70	7 yrs	70,000 hrs	80W	Non-Cutoff

### Construction

Heavy duty cast aluminum  
High quality shatterproof glass  
Power coat finish

### Key

\* Indicates the fixture has a photo cell



Circular Grid



Mini Non Cutoff

# Flood Light Fixtures



### **Applications**

- Lodging
- Landscape
- Retail
- Parking lots & more

### **Features**

- Mercury free fixtures
- No UV emissions
- Substantial energy savings over metal halide
- Suitable for interior or exterior use
- Instant on/off
- 120-277V

### **Certifications**

- UL
- DLC

Product Number	Kelvin Temperature	Lumen Output	Efficacy	CRI	Voltage	Rating (L70)	Wattage
743218	4000K	900 lm	75 lm/W	80	7 yrs	50,000 hrs	12W
743219	5000K	1000 lm	83 lm/W	80	7 yrs	50,000 hrs	12W
743220	5000K	1100 lm	79 lm/W	80	5 yrs	50,000 hrs	15W
743221	5000K	1160 lm	87 lm/W	80	5 yrs	50,000 hrs	15W
743222	5000K	1160 lm	87 lm/W	80	5 yrs	50,000 hrs	15W
743223	5000K	1160 lm	87 lm/W	80	5 yrs	50,000 hrs	15W
743224	5000K	1160 lm	87 lm/W	80	5 yrs	50,000 hrs	15W
743225	5000K	1670 lm	78 lm/W	80	5 yrs	50,000 hrs	25W
743226	5000K	1730 lm	81 lm/W	80	5 yrs	50,000 hrs	25W
743227	5550K	2324 lm	78 lm/W	70	7 yrs	50,000 hrs	30W
743228	5000K	3360 lm	80 lm/W	70	5 yrs	50,000 hrs	45W
743229	5000K	3620 lm	91 lm/W	70	5 yrs	50,000 hrs	45W
743230	5000K	3620 lm	91 lm/W	70	5 yrs	50,000 hrs	45W
743231	5550K	4262 lm	85 lm/W	60	7 yrs	50,000 hrs	50W
743232	5500K	9859 lm	82 lm/W	73	7 yrs	50,000 hrs	120W

### **Options**

Distribution: Flood or Spot  
 Mounting: Recessed Outlet or Direct to Surface

### **Construction**

Heavy duty cast aluminum  
 High quality shatterproof glass  
 Polyester powder coat finish

# Area Fixtures



### Applications

- Warehouse
- Big-Box Retail Stores
- Gymnasiums
- Parking Lots
- Convention Centers
- Exterior areas in need of more light

### Features

- Floods area with light
- No UV emissions
- No flickering or noise
- Instant on/off
- Dimmable
- 120-277V

### Certifications

- UL
- DLC

Product Number	Kelvin Temperature	Lumen Output	Efficacy	CRI	Warranty	Rating (L70)	Wattage	Style
281354*	4100K	2850 lm	81 lm/W	70	7 yrs	70,000 hrs	35W	Round
281355*	5000K	2900 lm	82 lm/W	70	7 yrs	70,000 hrs	35W	Round
281356*	4100K	4100 lm	82 lm/W	70	7 yrs	70,000 hrs	50W	Round
281357*	5000K	4200 lm	84 lm/W	70	7 yrs	70,000 hrs	50W	Round
281358**	4000K	10455 lm	106 lm/W	86	7 yrs	50,000 hrs	100W	Square
281359**	5000K	10455 lm	106 lm/W	86	7 yrs	50,000 hrs	100W	Square
281360**	4000K	15350 lm	106 lm/W	85	7 yrs	50,000 hrs	150W	Square
281361**	5000K	15350 lm	106 lm/W	85	7 yrs	50,000 hrs	150W	Square
281362**	4000K	19415 lm	106 lm/W	86	7 yrs	50,000 hrs	200W	Square
281363	5000K	19415 lm	106 lm/W	86	7 yrs	50,000 hrs	200W	Square
281364	4000K	19415 lm	106 lm/W	86	7 yrs	50,000 hrs	200W	Square
281365	5000K	19415 lm	106 lm/W	86	7 yrs	50,000 hrs	200W	Square
281366	4000K	30959 lm	105 lm/W	87	7 yrs	50,000 hrs	300W	Square
281367	5000K	30959 lm	105 lm/W	87	7 yrs	50,000 hrs	300W	Square
281368	4000K	45972 lm	105 lm/W	88	7 yrs	50,000 hrs	450W	Square
281369	5000K	45972 lm	105 lm/W	88	7 yrs	50,000 hrs	450W	Square

### Options

Round or Linear Fixture  
Mounting Brackets

### Construction

Heavy duty cast aluminum  
High quality shatterproof glass  
Polyester powder coat finish

### Key

\* Indicates fixture with a photo cell  
\*\* Indicates dimming capability

# Area Shoebox Fixtures



### Applications

- Parking Lots
- Streets
- Walkways
- Exterior areas in need of more light

### Features

- Mercury free fixtures
- No UV emissions
- Substantial energy savings over HID or HPS
- Suitable for interior or exterior use
- Multiple mounting options
- Instant on/off
- 120-277V

### Certifications



- UL
- DLC

Product Number	Kelvin Temperature	Lumen Output	Efficacy	CRI	Warranty	Rating (L70)	Wattage
354789-A	3000K	3600 lm	120 lm/W	70	5 yrs	50,000 hrs	30W
354789-B	4000K	3850 lm	128 lm/W	70	5 yrs	50,000 hrs	30W
354789-C	5000K	4100 lm	136 lm/W	70	5 yrs	50,000 hrs	30W
354790-A	3000K	3600 lm	72 lm/W	70	5 yrs	50,000 hrs	50W
354790-B	4000K	3850 lm	77 lm/W	70	5 yrs	50,000 hrs	50W
354796**	4000K	4440 lm	74 lm/W	65	7 yrs	50,000 hrs	60W
354797**	5000K	4440 lm	74 lm/W	65	7 yrs	50,000 hrs	60W
354790-C	5000K	4100 lm	87 lm/W	70	5 yrs	50,000 hrs	50W
354802	5000K	5470 lm	89 lm/W	66	5 yrs	50,000 hrs	70W
354798	4000K	6130 lm	76 lm/W	65	7 yrs	50,000 hrs	80W
354799	5000K	6130 lm	76 lm/W	65	7 yrs	50,000 hrs	80W
354791-A	3000K	6600 lm	82 lm/W	70	5 yrs	50,000 hrs	80W
354791-B	4000K	7200 lm	90 lm/W	70	5 yrs	50,000 hrs	80W
354791-C	5000K	7800 lm	97 lm/W	70	5 yrs	50,000 hrs	80W
354792-A	3000K	8000lm	80 lm/W	70	5 yrs	50,000 hrs	100W
354792-B	4000K	8500 lm	85 lm/W	70	5 yrs	50,000 hrs	100W
354792-C	5000K	9000 lm	90 lm/W	70	5 yrs	50,000 hrs	100W
354803	5000K	9130 lm	92 lm/W	66	5 yrs	50,000 hrs	100W
354804	5000K	11730 lm	86 lm/W	66	5 yrs	50,000 hrs	136W
354800*	4000K	11900 lm	79 lm/W	77	7 yrs	50,000 hrs	150W
354801*	5000K	11900 lm	79 lm/W	77	7 yrs	50,000 hrs	150W
354793-A	3000K	12900 lm	86 lm/W	70	5 yrs	50,000 hrs	150W
354793-B	4000K	13950 lm	93 lm/W	70	5 yrs	50,000 hrs	150W
354793-C	5000K	15000 lm	100 lm/W	70	5 yrs	50,000 hrs	150W
354794-A	3000K	18000 lm	90 lm/W	70	5 yrs	50,000 hrs	200W
354794-B	4000K	20000 lm	100 lm/W	70	5 yrs	50,000 hrs	200W
354794-C	5000K	22000 lm	110 lm/W	70	5 yrs	50,000 hrs	200W
354795-A	3000K	26500lm	88 lm/W	70	5 yrs	50,000 hrs	300W
354795-B	4000K	27500 lm	91 lm/W	70	5 yrs	50,000 hrs	300W
354795-C	5000K	28500 lm	95 lm/W	70	5 yrs	50,000 hrs	300W

# Miscellaneous Exterior Fixtures



### Applications

- Canopy
- General Site Lighting
- Landscape Lighting
- Pathway Lighting

### Features -Flag Pole

- 140 degree beam angle
- Suitable for wet locations

### Features -Bollard

- Flush mounting base
- Domed top

### Features -Canopy

- High LED count with even illumination
- Instant on/off, mercury free
- Surface mount
- 120-277V

### Certifications

- UL
- DLC

Product Number	Kelvin Temperature	Lumen Output	Efficacy	CRI	Warranty	Rating (L70)	Wattage	Fixture Type
268743	5000K	1384 lm	92 lm/W	83	5 yrs	50,000 hrs	15W	Bollard
463466	5000K	2500 lm	83 lm/W	83	7 yrs	70,000 hrs	30W	Flag Pole
731457	5000K	4100 lm	97 lm/W	75	5 yrs	50,000 hrs	42W	Canopy
731458	5500K	9620 lm	96 lm/W	73	7 yrs	50,000 hrs	100W	Canopy

### Construction-Flag Pole

Aluminum housing  
Powdercoat finish

### Construction-Bollard

Clear polycarbonate lens  
Aluminum housing  
Powdercoat finish  
Cone reflector

### Construction-Canopy

Powdercoat finish  
Aluminum housing  
Cast-aluminum heat sink



# Street Light Fixtures



### Applications

- Warehouse
- Big-Box Retail Stores
- Gymnasiums
- Parking Lots
- Convention Centers
- Exterior areas in need of more light

### Features

- Floods area with light
- No UV emissions
- No flickering or noise
- Instant on/off
- Mulpile mountin options
- 120-277V

### Certifications

- UL
- DLC



Product Number	Kelvin Temperature	Lumen Output	Efficacy	CRI	Warranty	Rating (L70)	Wattage
986467*	4100K	4100 lm	82 lm/W	70	7 yrs	70,000 hrs	50W
986468*	5000K	4200 lm	84 lm/W	70	7 yrs	70,000 hrs	50W
986469	5000K	5340 lm	100 lm/W	70	10 yrs	50,000 hrs	53W
986470	5000K	9612 lm	95 lm/W	70	10 yrs	50,000 hrs	101W

### Construction

Durable aluminum material  
Powder coat finish

### Key

\* Indicates the fixture has a photo cell



## Medium/High Power Utility Bulbs



### Applications

- Commercial
- Lodging
- Schools
- Hospitals
- Clinics
- Assisted Living Facilities

### Features

- Environmentally friendly
- Even light output
- E26/E27/E40 bases for easy replacement
- Instant on/off

### Certifications

- UL
- DLC on select lamps

Product Number	Kelvin Temperature	Lumen Output	Efficacy	CRI	Warranty	Rating (L70)	Wattage
846857-A	3000K	1900lm	95 lm/W	80	5 yrs	50,000 hrs	20W
846857-B	4000K	1900 lm	95 lm/W	80	5 yrs	50,000 hrs	20W
846857-C	5000K	1900 lm	95 lm/W	80	5 yrs	50,000 hrs	20W
846857-D	6000K	1900 lm	95 lm/W	80	5 yrs	50,000 hrs	20W
846858-A	3000K	2800 lm	93 lm/W	80	5 yrs	50,000 hrs	30W
846858-B	4000K	2800 lm	93 lm/W	80	5 yrs	50,000 hrs	30W
846858-C	5000K	2800 lm	93 lm/W	80	5 yrs	50,000 hrs	30W
846858-D	6000K	2800 lm	93 lm/W	80	5 yrs	50,000 hrs	30W
846859-A	3000K	3800 lm	95 lm/W	80	5 yrs	50,000 hrs	40W
846859-B	4000K	3800 lm	95 lm/W	80	5 yrs	50,000 hrs	40W
846859-C	5000K	3800 lm	95 lm/W	80	5 yrs	50,000 hrs	40W
846859-D	6000K	3800 lm	95 lm/W	80	5 yrs	50,000 hrs	40W
846860-A	3000K	5700 lm	95 lm/W	80	5 yrs	50,000 hrs	60W
846860-B	4000K	5700 lm	95 lm/W	80	5 yrs	50,000 hrs	60W
846860-C	5000K	5700 lm	95 lm/W	80	5 yrs	50,000 hrs	60W
846860-D	6000K	5700 lm	95 lm/W	80	5 yrs	50,000 hrs	60W
846861-A*	3000K	7600 lm	95 lm/W	80	5 yrs	50,000 hrs	80W
846861-B*	4000K	7600 lm	95 lm/W	80	5 yrs	50,000 hrs	80W
846861-C*	5000K	7600 lm	95 lm/W	80	5 yrs	50,000 hrs	80W
846861-D*	6000K	7600 lm	95 lm/W	80	5 yrs	50,000 hrs	80W
846862-A*	3000K	9500 lm	95 lm/W	80	5 yrs	50,000 hrs	100W
846862-B*	4000K	9500 lm	95 lm/W	80	5 yrs	50,000 hrs	100W
846862-C*	5000K	9500 lm	95 lm/W	80	5 yrs	50,000 hrs	100W
846862-D*	6000K	9500 lm	95 lm/W	80	5 yrs	50,000 hrs	100W
846863-A*	3000K	11400 lm	95 lm/W	80	5 yrs	50,000 hrs	120W
846863-B*	4000K	11400 lm	95 lm/W	80	5 yrs	50,000 hrs	120W
846863-C*	5000K	11400 lm	95 lm/W	80	5 yrs	50,000 hrs	120W
846863-D*	6000K	11400 lm	95 lm/W	80	5 yrs	50,000 hrs	120W
846864-A*	3000K	14000 lm	93 lm/W	80	5 yrs	50,000 hrs	150W
846864-B*	4000K	14000 lm	93 lm/W	80	5 yrs	50,000 hrs	150W
846864-C*	5000K	14000 lm	93 lm/W	80	5 yrs	50,000 hrs	150W
846864-D*	6000K	14000 lm	93 lm/W	80	5 yrs	50,000 hrs	150W

### Construction

Durable-shatterproof plastic  
 Aluminum heat sink to draw heat away from surface  
 High power LED chips to produce optimal light

Call for dimension specifications

### Key

\* Indicates DLC rating



# High Bay Fixtures



### Applications

- Warehouses
- Gymnasium
- Stadiums
- Convention Centers
- Big-Box Retail

### Features

- Long life span
- No UV emissions
- 50%+ energy savings over traditional fixtures
- No mercury, noise, or flickering
- Instant on/off

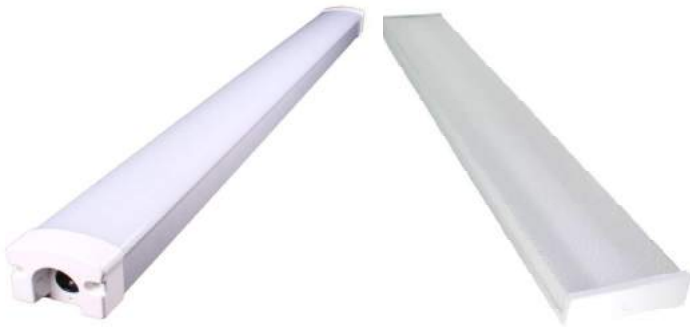
### Certifications

- UL
- DLC
- RoSH

Product Number	Kelvin Temperature	Lumen Output	Efficacy	CRI	Warranty	Rating (L70)	Wattage	Style
573573-A	4000K	9190 lm	128 lm/W	85	7 yrs	50,000 hrs	72W	Linear
573573-B	5000K	9190 lm	128 lm/W	85	7 yrs	50,000 hrs	72W	Linear
573574-A	4000K	8976 lm	100 lm/W	85	7 yrs	50,000 hrs	90W	Linear
573574-B	5000K	8976 lm	100 lm/W	85	7 yrs	50,000 hrs	90W	Linear
573575-A	4000K	10560 lm	110 lm/W	85	7 yrs	50,000 hrs	96W	Linear
573575-B	5000K	10560 lm	110 lm/W	85	7 yrs	50,000 hrs	96W	Linear
573592-A	4000K	10710 lm	108 lm/W	85	7 yrs	50,000 hrs	100W	Linear
573592-B	5000K	10710 lm	108 lm/W	85	7 yrs	50,000 hrs	100W	Linear
573576	4000K	11400 lm	95 lm/W	85	7 yrs	50,000 hrs	150W	Linear
573577	5000K	11400 lm	95 lm/W	85	7 yrs	50,000 hrs	150W	Linear
573578	4000K	11400 lm	95 lm/W	85	7 yrs	50,000 hrs	150W	Linear
573579	5000K	11400 lm	95 lm/W	85	7 yrs	50,000 hrs	150W	Linear
573586-A	4000K	14929 lm	100 lm/W	81	7 yrs	50,000 hrs	150W	Round
573586-B	5000K	14929 lm	100 lm/W	81	7 yrs	50,000 hrs	150W	Round
573593	4000K	15157 lm	104 lm/W	85	7 yrs	50,000 hrs	150W	Linear
573594	5000K	15157 lm	104 lm/W	85	7 yrs	50,000 hrs	150W	Linear
573588-A	4000K	16400 lm	109 lm/W	83	7 yrs	50,000 hrs	150W	Round
573588-B	5000K	16400 lm	109 lm/W	83	7 yrs	50,000 hrs	150W	Round
573580	5000K	13430 lm	83 lm/W	70	5 yrs	50,000 hrs	160W	Pendant
573581	5000K	15870 lm	80 lm/W	70	5 yrs	50,000 hrs	200W	Pendant
573582	4000K	20100 lm	100 lm/W	85	7 yrs	50,000 hrs	200W	Linear
573583	5000K	20100 lm	100 lm/W	85	7 yrs	50,000 hrs	200W	Linear
573584	4000K	20100 lm	100 lm/W	85	7 yrs	50,000 hrs	200W	Linear
573585	5000K	20100 lm	100 lm/W	85	7 yrs	50,000 hrs	200W	Linear
573587-A	4000K	19180 lm	103 lm/W	81	7 yrs	50,000 hrs	200W	Round
573587-B	5000K	19180 lm	103 lm/W	81	7 yrs	50,000 hrs	200W	Round
573589-A	4000K	20900 lm	104 lm/W	83	7 yrs	50,000 hrs	200W	Round
573589-B	5000K	20900 lm	104 lm/W	83	7 yrs	50,000 hrs	200W	Round
573595	4000K	19537 lm	108 lm/W	85	7 yrs	50,000 hrs	200W	Linear
573596	5000K	19537 lm	108 lm/W	85	7 yrs	50,000 hrs	200W	Linear
573597	4000K	29000 lm	96 lm/W	85	7 yrs	50,000 hrs	300W	Linear
573598	5000K	29000 lm	96 lm/W	85	7 yrs	50,000 hrs	300W	Linear
573590	6000K	40300 lm	83 lm/W	72	7 yrs	50,000 hrs	480W	Round
573591	6000K	46700 lm	77 lm/W	73	7 yrs	50,000 hrs	600W	Round



# Vapor Tight & Stairwell Fixtures



### Applications

- Wet Environments
- Hospitals
- Recreation Centers
- Parking Garages
- Warehouses

### Features

- Made for wet or hazardous environments
- Utility wrap fixture or vapor tight
- Ceiling or wall mountable
- Impact resistant polycarbonate lens
- Suitable for interior or exterior use
- Instant on/off

### Certifications

- UL
- DLC

Product Number	Kelvin Temperature	Lumen Output	Size	Efficacy	CRI	Warranty	Rating (L70)	Wattage
613472	4000K	3583 lm	4'	119 lm/W	83	5 yrs	50,000 hrs	30W
134859-A	4000K	2550 lm	2'	85 lm/W	83	7 yrs	50,000 hrs	30W
134859-B	5000K	2550 lm	2'	85 lm/W	83	7 yrs	50,000 hrs	30W
134860-A	4000K	3800 lm	4'	95 lm/W	84	7 yrs	50,000 hrs	40W
134860-B	5000K	3800 lm	4'	95 lm/W	84	7 yrs	50,000 hrs	40W
134861-A	4000K	4700 lm	4'	94 lm/W	83	7 yrs	50,000 hrs	50W
134861-B	5000K	4700 lm	4'	94 lm/W	83	7 yrs	50,000 hrs	50W
134862	4500K	5907 lm	1x4	93 lm/W	86	7 yrs	50,000 hrs	60W
134863	5000K	6500 lm	1x4	108 lm/W	87	7 yrs	50,000 hrs	60W

### Options

Tamper proof housing or regular  
 Lighting angle: 180 degrees or flood light distribution  
 Vapor tight or Utility Wrap



# Troffer & Thin Panel Fixtures



### Applications

- Offices
- Hospitals
- Retail
- Schools
- Lodging

### Features

- Long life span
- No UV emissions
- 50%+ energy savings over traditional fixtures
- No mercury, noise, or flickering
- Instant on/off

### Certifications

- UL
- DLC
- RoSH

Product Number	Kelvin Temperature	Lumen Output	Size	Efficacy	CRI	Warranty	Rating (L70)	Wattage
613484	4000K	2706 lm	2x2	85 lm/W	81	7 yrs	50,000 hrs	30W
613485	5000K	3000 lm	2x2	100 lm/W	83	7 yrs	50,000 hrs	30W
613486	4000K	3176 lm	2x2	88 lm/W	86	7 yrs	50,000 hrs	36W
613487	4000K	3270 lm	1x4	82 lm/W	80	7 yrs	50,000 hrs	36W
613488	5000K	8450 lm	1x4	86 lm/W	80	7 yrs	50,000 hrs	36W
613489	3500K	3500 lm	2x2	87 lm/W	84	7 yrs	50,000 hrs	40W
613490	4500K	3500 lm	2x2	87 lm/W	84	7 yrs	50,000 hrs	40W
613491	5500K	3500 lm	2x2	87 lm/W	84	7 yrs	50,000 hrs	40W
613492	5000K	3600 lm	2x2	90 lm/W	85	7 yrs	50,000 hrs	40W
613493	4000K	3296 lm	2x2	83 lm/W	81	7 yrs	50,000 hrs	40W
613494	5000K	3720 lm	2x2	99 lm/W	83	7 yrs	50,000 hrs	40W
613495	4000K	3913 lm	2x4	93 lm/W	86	7 yrs	50,000 hrs	42W
613496	4000K	4193 lm	2x4	87 lm/W	80	7 yrs	50,000 hrs	50W
613497	5000K	4193 lm	2x4	83 lm/W	80	7 yrs	50,000 hrs	50W
613498	4000K	6364 lm	2x4	93 lm/W	85	7 yrs	50,000 hrs	68W
613499	4000K	6845 lm	2x4	88 lm/W	84	7 yrs	50,000 hrs	75W
613500	5000K	7000 lm	2x4	93 lm/W	84	7 yrs	50,000 hrs	75W

### Options

- Thin Panel
- Double Barrel
- Single Lens



# A19/A21 Bulbs



**Applications**

- Residential
- Commercial
- Schools
- Lodging
- Restaurants
- Hospitals

**Features**

- Dimmable
- Even light output
- Omni-directional light output
- Save 80%+ on energy usage
- 120V

**Certifications**

- UL
- Energy Star

Product Number	Kelvin Temperature	Lumen Output	Efficacy	CRI	Warranty	Rating (L70)	Wattage
513148	3000K	470 lm	67 lm/W	83	5 yrs	25,000 hrs	7W
513149	4000K	575 lm	82 lm/W	83	5 yrs	25,000 hrs	7W
513162	2700K	800 lm	114 lm/W	83	5 yrs	25,000 hrs	7W
513164	2700K	810 lm	115 lm/W	80	5 yrs	25,000 hrs	7W
513163*	2700K	800 lm	88 lm/W	80	5 yrs	25,000 hrs	9W
513165*	3000K	800 lm	88 lm/W	80	3 yrs	25,000 hrs	9W
513150	3000K	800 lm	83 lm/W	80	5 yrs	25,000 hrs	10W
513151	4000K	800 lm	83 lm/W	80	5 yrs	25,000 hrs	10W
513152	3000K	800 lm	83 lm/W	81	5 yrs	25,000 hrs	10W
513153	4000K	800 lm	83 lm/W	81	5 yrs	25,000 hrs	10W
513155	4000K	800 lm	80 lm/W	80	5 yrs	25,000 hrs	10W
513156	5000K	800 lm	80 lm/W	80	5 yrs	25,000 hrs	10W
513154	3000K	800 lm	72 lm/W	85	5 yrs	25,000 hrs	11W
513157	3000K	800 lm	72 lm/W	80	3 yrs	25,000 hrs	11W
513158	4000K	800 lm	72 lm/W	80	3 yrs	25,000 hrs	11W
513159	5000K	800 lm	72 lm/W	80	3 yrs	25,000 hrs	11W
513160	3000K	800 lm	66 lm/W	96	5 yrs	25,000 hrs	12W
513161	4000K	800 lm	66 lm/W	95	5 yrs	25,000 hrs	12W

**Options**

- Filament Bulbs
- Fully Enclosed Bulbs

**Construction**

Aluminum and plastic housing. Aluminum acts as a heat sink so the bulbs are cool to the touch

\* Indicates 120V-277V

# A19/A21 Bulbs



**Applications**

- Residential
- Commercial
- Schools
- Lodging
- Restaurants
- Hospitals

**Features**

- Dimmable
- Even light output
- Omni-directional light output
- Save 80%+ on energy usage

**Certifications**

- UL
- Energy Star

Product Number	Kelvin Temperature	Lumen Output	Efficacy	CRI	Warranty	Rating (L70)	Wattage
513166*	4000K	800 lm	88 lm/W	80	3 yrs	25,000 hrs	9W
513174	3000K	900 lm	81 lm/W	80	3 yrs	25,000 hrs	11W
513175	4000K	900 lm	81 lm/W	80	3 yrs	25,000 hrs	11W
513176	5000K	900 lm	81 lm/W	80	3 yrs	25,000 hrs	11W
513177	2700K	1100 lm	100 lm/W	82	5 yrs	25,000 hrs	11W
513178	3000K	1100 lm	100 lm/W	82	5 yrs	25,000 hrs	11W
513179	4000K	1100 lm	100 lm/W	82	5 yrs	25,000 hrs	11W
513167	3000K	1100 lm	91 lm/W	80	5 yrs	25,000 hrs	12W
513168	4000K	1100 lm	91 lm/W	80	5 yrs	25,000 hrs	12W
513171	2700K	1100 lm	92 lm/W	80	3 yrs	25,000 hrs	12W
513172	3000K	1150 lm	96 lm/W	80	3 yrs	25,000 hrs	12W
513173	4000K	1180 lm	98 lm/W	80	3 yrs	25,000 hrs	12W
513180	2700K	1600 lm	106 lm/W	82	5 yrs	25,000 hrs	15W
513181	3000K	1600 lm	106 lm/W	82	5 yrs	25,000 hrs	15W
513182	4000K	1600 lm	106 lm/W	82	5 yrs	25,000 hrs	15W
513169	3000K	1600 lm	94 lm/W	83	5 yrs	25,000 hrs	17W
513170	4000K	1600 lm	94 lm/W	83	5 yrs	25,000 hrs	17W

**Options**

- Filament Bulbs
- Fully Enclosed Bulbs

\* Indicates 120-277V

**Construction**

Aluminum and plastic housing. Aluminum acts as a heat sink so the bulbs are cool to the touch

## BR Bulbs



### Applications

- Residential
- Offices
- Schools
- Lodging
- Restaurants
- Retail

### Features

- BR shape with frosted plastic diffusers
- Even light output
- E26/E27 bases for easy replacement
- 120V
- Instant on/off

### Certifications

- UL
- Energy Star



Product Number	Kelvin Temperature	Lumen Output	Efficacy	CRI	Voltage	Rating (L70)	Wattage	Size
268100	3000K	500 lm	72 lm/W	80	5 yrs	25,000 hrs	7W	BR20
268101	3000K	550 lm	74 lm/W	80	5 yrs	25,000 hrs	7W	BR20
268102	4000K	580 lm	78 lm/W	80	5 yrs	25,000 hrs	7W	BR20
268103	3000K	650 lm	80 lm/W	83	5 yrs	25,000 hrs	8W	BR30
268104	3000K	800 lm	72 lm/W	80	5 yrs	25,000 hrs	11W	BR30
268107	3000K	850 lm	76 lm/W	83	5 yrs	25,000 hrs	11W	BR30
268108	4000K	980 lm	89 lm/W	80	5 yrs	25,000 hrs	11W	BR30
268106	4000K	800 lm	57 lm/W	94	5 yrs	25,000 hrs	12W	BR30
268115	3000K	1080 lm	83 lm/W	81	3 yrs	25,000 hrs	12W	BR30
268116	4000K	1080 lm	83 lm/W	81	3 yrs	25,000 hrs	12W	BR30
268117	5000K	1080 lm	83 lm/W	81	3 yrs	25,000 hrs	12W	BR30
268110	3000K	1050 lm	80 lm/W	83	5 yrs	25,000 hrs	13W	BR40
268105	3000K	800 lm	57 lm/W	95	5 yrs	25,000 hrs	14W	BR30
268109	3000K	1000 lm	61 lm/W	95	5 yrs	25,000 hrs	16W	BR40
268111	4000K	1200 lm	75 lm/W	94	5 yrs	25,000 hrs	16W	BR40
268112	3000K	1400 lm	82 lm/W	83	5 yrs	25,000 hrs	17W	BR40
268113	4000K	1400 lm	82 lm/W	80	5 yrs	25,000 hrs	17W	BR40
268114	3000K	1400 lm	82 lm/W	80	5 yrs	25,000 hrs	17W	BR40

### Construction

Constructed of durable aluminum and plastic components  
Aluminum heat sink allows bulbs to stay cool to the touch

# Par Bulbs



### Applications

- Residential
- Offices
- Schools
- Lodging
- Restaurants
- Retail

### Features

- Par shape with frosted plastic diffusers
- Even light output
- E26/E27 bases for easy replacement
- Instant on/off

### Certifications

- UL
- Energy Star

Product Number	Kelvin Temperature	Lumen Output	Efficacy	CRI	Warranty	Rating (L70)	Wattage	Size
865784	3000K	470 lm	61 lm/W	82	5 yrs	25,000 hrs	7W	PAR 20
865785	4000K	470 lm	67 lm/W	81	5 yrs	25,000 hrs	7W	PAR 20
865786	3000K	470 lm	67 lm/W	80	5 yrs	25,000 hrs	7W	PAR 20
865787	3000K	470 lm	67 lm/W	80	5 yrs	25,000 hrs	7W	PAR 20
865790	3000K	850 lm	70 lm/W	82	5 yrs	25,000 hrs	12W	Par 30
865791	4000K	850 lm	70 lm/W	82	5 yrs	25,000 hrs	12W	Par 30
865793	3000K	850 lm	70 lm/W	80	5 yrs	25,000 hrs	12W	Par 30
865794	3000K	850 lm	70 lm/W	80	5 yrs	25,000 hrs	12W	Par 30
865788	3000K	800 lm	61 lm/W	80	5 yrs	25,000 hrs	13W	Par 30
865789	5000K	850 lm	65 lm/W	80	5 yrs	25,000 hrs	13W	Par 30
865792	5000K	850 lm	65 lm/W	80	5 yrs	25,000 hrs	13W	Par 30
865795*	3000K	1150 lm	67 lm/W	90	5 yrs	25,000 hrs	17W	Par 38
865796*	4000K	1200 lm	70 lm/W	90	5 yrs	25,000 hrs	17W	Par 38
865797	3000K	1300 lm	76 lm/W	80	5 yrs	25,000 hrs	17W	Par 38
865798	4000K	1300 lm	76 lm/W	80	5 yrs	25,000 hrs	17W	Par 38
865799	3000K	1300 lm	76 lm/W	80	5 yrs	25,000 hrs	17W	Par 38
865800	3000K	1300 lm	76 lm/W	80	5 yrs	25,000 hrs	17W	Par 38

### Options

Degree size: 25 or 40

### Key

\* Indicates 277V



# Downlight Retrofits



### **Applications**

- Offices
- Lodging
- Schools
- Residential
- Restaurants
- Retail

### **Features**

- Environmentally friendly
- Even light output
- Easy installation, fits into recessed fixtures
- Dimmable
- Instant on/off

### **Certifications**

- UL
- Energy Star



Product Number	Kelvin Temperature	Lumen Output	Diameter	Efficacy	CRI	Voltage	Rating (L70)	Wattage
913484	2700K	720 lm	4"	65 lm/W	85	120V	35,000 hrs	11W
913486	3000K	700 lm	4"	58 lm/W	90	120V	35,000 hrs	11W
913488	4000K	750 lm	4"	62 lm/W	90	120V	35,000 hrs	11W
913490	5000K	800 lm	4"	66 lm/W	90	120V	35,000 hrs	11W
913485	3000K	700 lm	4"	58 lm/W	90	120V	35,000 hrs	12W
913487	4000K	750 lm	4"	62 lm/W	90	120V	35,000 hrs	12W
913489	5000K	800 lm	4"	66 lm/W	90	120V	35,000 hrs	12W
913491	2700K	800 lm	6"	66 lm/W	90	120V	35,000 hrs	12W
913493	3000K	900 lm	6"	69 lm/W	90	120V	35,000 hrs	13W
913494	4000K	950 lm	6"	73 lm/W	90	120V	35,000 hrs	13W
913495	5000K	1000 lm	6"	76 lm/W	90	120V	35,000 hrs	13W
913492*	3000K	900 lm	6"	60 lm/W	80	277V	35,000 hrs	15W
913496	3000K	1250 lm	6"	65 lm/W	80	120V	35,000 hrs	19W
913497	4000K	1300 lm	6"	68 lm/W	80	120V	35,000 hrs	19W
913498	5000K	1350 lm	6"	71 lm/W	80	120V	35,000 hrs	19W
913499	2700K	1450 lm	6"	76 lm/W	80	120V	35,000 hrs	19W

### **Options**

Fits most 4", 5" and 6" recessed cans with torsion spring  
Trim ring plane (pictured) or rippled

\* Indicates 277V

### **Construction**

Durable die-cast aluminum heat sink  
Integrated trim all in one piece  
Impact-resistant plastic lens





# Ceiling Can Light PL Retrofit Bulbs



### Applications

- Offices
- Lodging
- Schools
- Residential
- Restaurants
- Retail

### Features

- Multiple base styles
- Even light output
- Easy installation, fits into recessed fixtures
- Instant on/off
- 120-277V

### Certifications

- UL



Product Number	Kelvin Temperature	Lumen Output	Efficacy	CRI	Warranty	Rating (L70)	Wattage	Bulb Type
645784*	4000K	350 lm	87.5 lm/W	85	3 yrs	30,000 hrs	4W	GX23
645785*	4000K	550 lm	91.6 lm/W	85	3 yrs	30,000 hrs	6W	GX23
645787	2700K	500 lm	83 lm/W	85	5 yrs	50,000 hrs	6W	GX23
645788	3000K	500 lm	83 lm/W	85	5 yrs	50,000 hrs	6W	GX23
645789	3500K	525 lm	88 lm/W	85	5 yrs	50,000 hrs	6W	GX23
645790	4100K	525 lm	88 lm/W	85	5 yrs	50,000 hrs	6W	GX23
645791	5000K	525 lm	88 lm/W	85	5 yrs	50,000 hrs	6W	GX23
645792	2700K	500 lm	83 lm/W	85	5 yrs	50,000 hrs	6W	G24Q
645793	3000K	500 lm	83 lm/W	85	5 yrs	50,000 hrs	6W	G24Q
645794	3500K	525 lm	88 lm/W	85	5 yrs	50,000 hrs	6W	G24Q
645795	4100K	525 lm	88 lm/W	85	5 yrs	50,000 hrs	6W	G24Q
645796	5000K	525 lm	88 lm/W	85	5 yrs	50,000 hrs	6W	G24Q
645786*	4000K	640 lm	80 lm/W	85	3 yrs	30,000 hrs	8W	GX23
645797	2700K	675 lm	84 lm/W	85	5 yrs	50,000 hrs	8W	GX23
645798	3000K	675 lm	84 lm/W	85	5 yrs	50,000 hrs	8W	GX23
645799	3500K	725 lm	84 lm/W	85	5 yrs	50,000 hrs	8W	GX23
645800	4100K	725 lm	91 lm/W	85	5 yrs	50,000 hrs	8W	GX23
645801	5000K	725 lm	91 lm/W	85	5 yrs	50,000 hrs	8W	GX23
645802	2700K	675 lm	84 lm/W	85	5 yrs	50,000 hrs	8W	G24Q
645803	3000K	675 lm	84 lm/W	85	5 yrs	50,000 hrs	8W	G24Q
645804	3500K	725 lm	91 lm/W	85	5 yrs	50,000 hrs	8W	G24Q
645805	4100K	725 lm	91 lm/W	85	5 yrs	50,000 hrs	8W	G24Q
645806	5000K	725 lm	91 lm/W	85	5 yrs	50,000 hrs	8W	G24Q
645807-A	2700K	890 lm	59 lm/W	80	5 yrs	50,000 hrs	15W	G24Q
645807-B	3000K	920 lm	61 lm/W	80	5 yrs	50,000 hrs	15W	G24Q
645807-C	3500K	940 lm	62 lm/W	80	5 yrs	50,000 hrs	15W	G24Q
645807-D	4000K	970 lm	64 lm/W	80	5 yrs	50,000 hrs	15W	G24Q
645808-A	2700K	880 lm	58 lm/W	80	5 yrs	50,000 hrs	15W	G24Q
645808-B	3000K	912 lm	60 lm/W	80	5 yrs	50,000 hrs	15W	G24Q
645808-C	3500K	916 lm	61 lm/W	80	5 yrs	50,000 hrs	15W	G24Q
645808-D	4000K	950 lm	63 lm/W	80	5 yrs	50,000 hrs	15W	G24Q

### Options

Ballast Ready

### Key

\* Indicates 120V only

# MR16 & Candelabra Bulbs



### Applications

- Offices
- Lodging
- Schools
- Residential
- Restaurants
- Retail

### Features

- Environmentally friendly
- Even light output
- Easy installation into existing fixtures
- 120V Candelabras
- Easy installation into existing fixtures

### Certifications

- UL
- Energy Star

Product Number	Kelvin Temperature	Lumen Output	Efficacy	CRI	Warranty	Rating (L70)	Wattage	Bulb Type
431876	2700K	440 lm	110 lm/W	82	5 yrs	25,000 hrs	4W	Candelabra
431877	2700K	450 lm	113 lm/W	82	5 yrs	25,000 hrs	4W	Candelabra
431878	2700K	325 lm	65 lm/W	80	5 yrs	25,000 hrs	5W	Candelabra
513258	3000K	400 lm	57 lm/W	81	3 yrs	25,000 hrs	7W	MR16
513259-A	2700K	500 lm	71 lm/W	80	3 yrs	30,000 hrs	7W	MR16
513259-B	3000K	525 lm	75 lm/W	80	3 yrs	30,000 hrs	7W	MR16
513259-C	4000K	550 lm	79 lm/W	80	3 yrs	30,000 hrs	7W	MR16
513261-A	2400K	475 lm	68 lm/W	80	3 yrs	30,000 hrs	7W	MR16
513261-B	2700K	525 lm	75 lm/W	80	3 yrs	30,000 hrs	7W	MR16
513261-C	3000K	560 lm	80 lm/W	80	3 yrs	30,000 hrs	7W	MR16
513261-D	4000K	580 lm	83 lm/W	80	3 yrs	30,000 hrs	7W	MR16
513260-A	2700K	500 lm	71 lm/W	92	3 yrs	30,000 hrs	7.5W	MR16
513260-B	3000K	525 lm	75 lm/W	92	3 yrs	30,000 hrs	7.5W	MR16
513260-C	4000K	550 lm	79 lm/W	92	3 yrs	30,000 hrs	7.5W	MR16

### Options-MR16

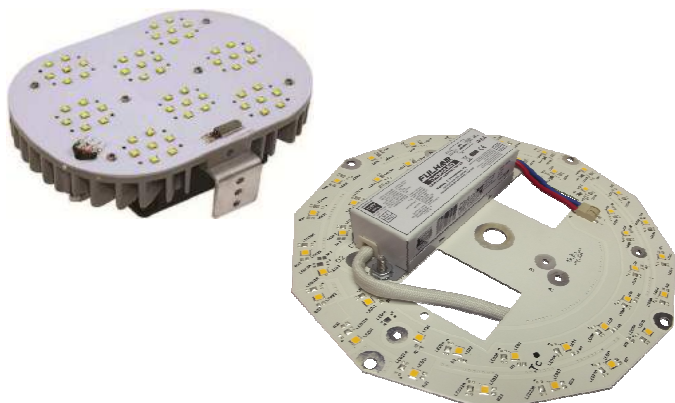
Viewing Angle (Degrees): 25,36 or 40  
 Base Configuration: 2-Pin or GU base

### Options-Candelabra

Tip: Flame Tip or Rounded  
 Filament bulbs



## Fixture Retrofit Panels



### Applications

- Existing Residential Light Fixtures
- Existing Exterior Light Fixtures

### Features

- Retrofit fixtures for all different existing fixtures
- High power retrofit fixtures are available for larger fixtures
- Easy installation, fits into existing fixtures
- 120-277V

### Certifications

- UL

Product Number	Kelvin Temperature	Lumen Output	Efficacy	CRI	Warranty	Rating (L70)	Wattage
318800-A	3000K	1450 lm	112 lm/W	80	5 yrs	50,000 hrs	13W
318800-B	4000K	1450 lm	121 lm/W	80	5 yrs	50,000 hrs	13W
318800-C	5000K	1450 lm	111 lm/W	80	5 yrs	50,000 hrs	13W
318797-A	3000K	1365 lm	89 lm/W	80	5 yrs	60,000 hrs	15W
318797-B	4000K	1470 lm	98 lm/W	80	5 yrs	60,000 hrs	15W
318797-C	5000K	1470 lm	98 lm/W	80	5 yrs	60,000 hrs	15W
318799-A	3000K	2325 lm	102 lm/W	80	5 yrs	50,000 hrs	21W
318799-B	4000K	2325 lm	110 lm/W	80	5 yrs	50,000 hrs	21W
318799-C	5000K	2325 lm	110 lm/W	80	5 yrs	50,000 hrs	21W
318798-A	3000K	2900 lm	108 lm/W	80	5 yrs	50,000 hrs	25W
318798-B	4000K	2900 lm	116 lm/W	80	5 yrs	50,000 hrs	25W
318798-C	5000K	2900 lm	116 lm/W	80	5 yrs	50,000 hrs	25W
318801	5000K	2330 lm	92.9 lm/W	75	5 yrs	50,000 hrs	36W
318793	5700K	5700 lm	95 lm/W	70	5 yrs	50,000 hrs	60W
318794	5700K	7600 lm	95 lm/W	70	5 yrs	50,000 hrs	80W
318795	5700K	9500 lm	95 lm/W	70	5 yrs	50,000 hrs	100W
318796	5700K	11400 lm	95 lm/W	70	5 yrs	50,000 hrs	120W

### Options

Interior or Exterior Panels Available



[www.solusled-usa.com](http://www.solusled-usa.com)

**8752 Monticello Lane N**

**Maple Grove MN 55369**

**P. 612.605.5806**

**Jim Azure—Sales**

**218.256.3084**

**[jim@solusled-usa.com](mailto:jim@solusled-usa.com)**